



# Spotlight – Export Burial History

## Exporting burial history data for Touchstone

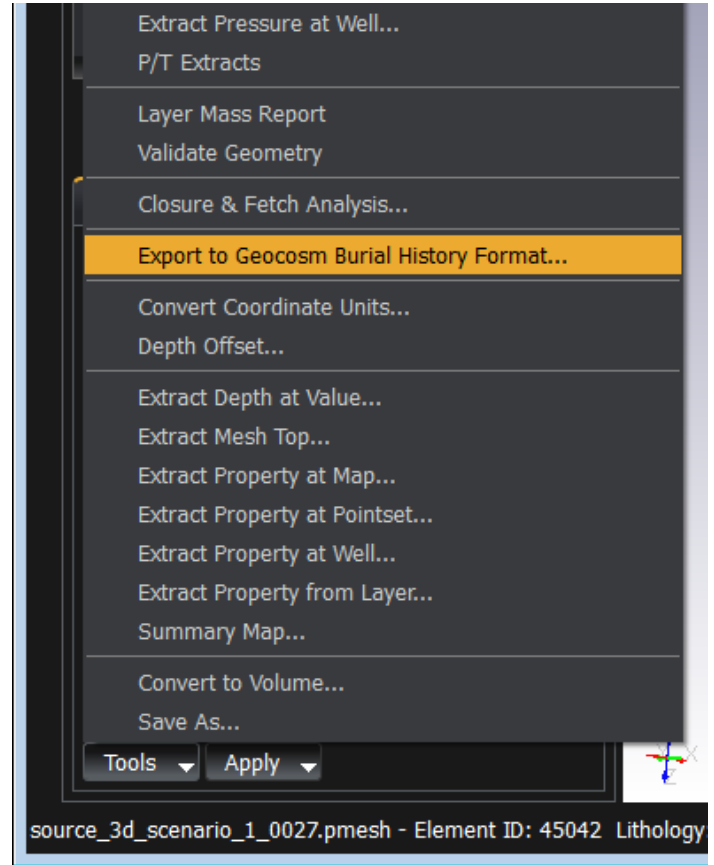
Using the Permedia Viewers 2D or 3D Viewer, you can export burial history information from any mesh, including PetroMod and Temis meshes, for use with Touchstone, Geocsm's reservoir quality analysis and modeling system. This workflow streamlines the process of loading burial histories into Touchstone for calibration wells, prospect reservoir intervals, or points along hydrocarbon migration pathways.

To export burial history data for Touchstone:

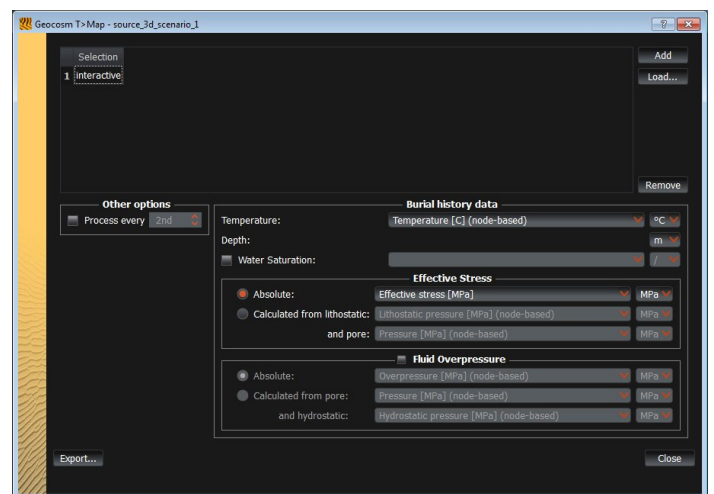
1. Open a mesh sequence in 3D Viewer.
  - (To do this, in the main window under Meshes, right-click the mesh sequence you want to evaluate and choose Open Sequence in 3D Viewer.)
2. From the Mode menu, choose Query Mode.
3. Click a point of interest in the mesh.
4. Click the Tools button and choose Export to Geocsm Burial History Format.
5. Set the Variables to Export by choosing mesh properties for Temperature, Overpressure, Effective stress and Water saturation.
6. Click Export.
7. Enter a File name for the exported file and click Save.

## For more information

For information on using the burial history file with Touchstone, visit [www.geocsm.net](http://www.geocsm.net).



Tools menu



TMap configuration window