



# Spotlight – Google Earth

## Exporting to Google Earth

Using the Permedia Viewers Google Earth export feature, you can export entire scenes from Map Viewer or 3D Viewer and load the data, including maps, volumes, wells, line sets and point sets, into Google Earth:

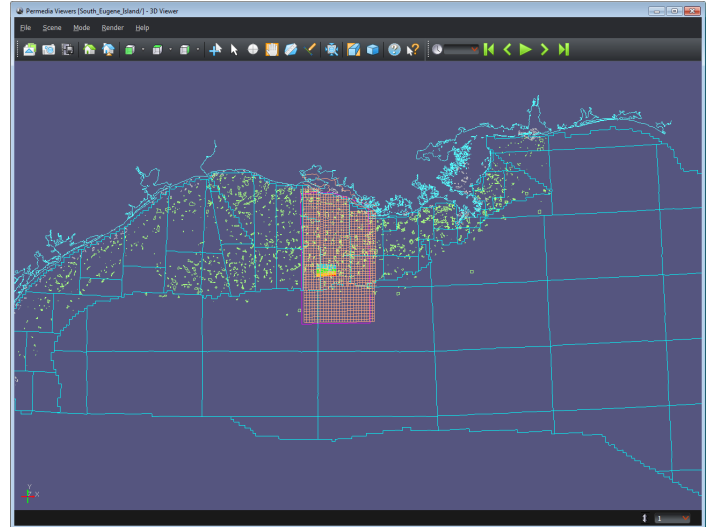
1. In the main window, under Viewers, click Map Viewer or 3D Viewer to open the viewer.
2. Drag and drop the objects you want to include in the scene from the project directory list to the viewer window.
3. From the File menu, choose Export to Google Earth.
4. Enter the UTM Zone where the data is located. (Click Show UTM Zones for a quick reference of UTM zone locations.)
5. Click OK.
6. Enter a File name and click Save.

Permedia writes a KML file to the project directory.<sup>1</sup>

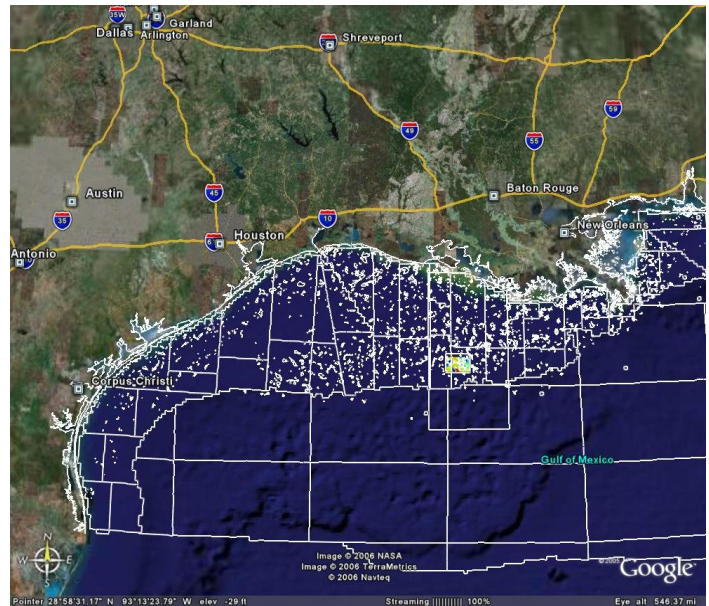
To load the KML file in Google Earth, from the File menu, choose Open, select the file you exported and click OK.

## Other things to try

Objects can be exported directly from the project directory list in the main window. Select the item you want to export and click the Tools button, or right-click the item, and choose Export to Google Earth.



South Eugene Island data set in 3D Viewer



South Eugene Island data set exported to Google Earth

<sup>1</sup> When exporting maps to Google Earth, Permedia creates a PNG image as well as a KML file with the latitude and longitude positions of the map corner points. The corner points are connected to form a polygon that represents the map boundary. When large-scale maps are displayed in Google Earth, the images and polylines may not be perfectly aligned, due to the way Google Earth handles regional-scale UTM projections.